



USB 2.0 2.5" / 3.5" SATA Hard Drive Docking Enclosure

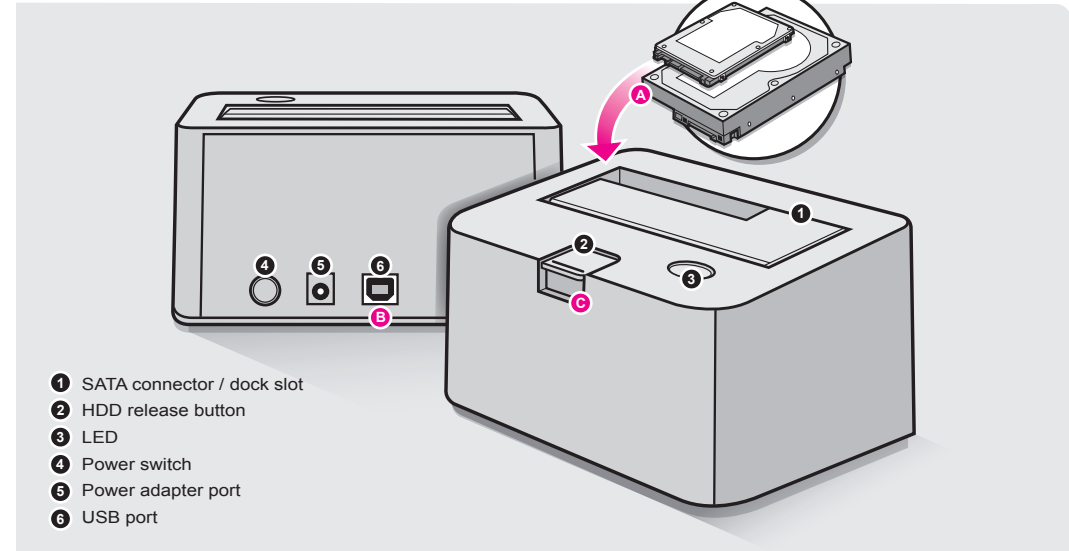
Easily Transfer data between your SATA hard drive and your computer

Features

- Turn your bare SATA drive into an external hard drive effortlessly
- No screws or ribbons / cables to connect
- The docking enclosure keeps your drive ultra cool for increased life expectancy
- High-Speed USB 2.0 w/ data transfer rate up to 480 Mbps
- Transfer data between your SATA hard drive and your computer
- Backward compatible with USB 1.1 specification
- Compact design is perfect for mobile/IT professional
- Compatible with all 2.5" and 3.5" SATA I/II Hard Drives
- Plug-n-Play, Hot swappable, and Hot pluggable
- Limited 1 Year Warranty



digital technology made fun



- 1 SATA connector / dock slot
- 2 HDD release button
- 3 LED
- 4 Power switch
- 5 Power adapter port
- 6 USB port

- A Insert either a 2.5" or 3.5" hard drive into the dock slot
- B Connect the USB cable to your computer to transfer data
- C Push the button to release the HDD from the dock

Specifications

Cable	(1) x 6' USB Type A - B Cable (1.8m)
Capacity	all 2.5" & 3.5" SATA I / II hard drives
Connector	(1) x USB Type-B
Housing	Plastic
LED's	(1) x Blue
Operating Humidity	10% to 85%, non-condensing
Operating Temperature	0°C~40°C (32°F~104°F)
Power Adapter	12V 2A
Storage Humidity	5% to 90%, non-condensing
Storage Temperature	-20°C~60°C (-4°F~140°F)
Transfer Rate	480 Mbps
Unit Dimensions (L x W x H)	5.25 in. (13.3 cm), 3.5 in. (8.9 cm), 2.75 in. (7 cm)
Unit Weight	9.6 oz. (0.27 kg)
USB Specification	USB 1.1 and 2.0 compliant

Requirements

- Windows 2000, XP & Vista
- Mac OS 10.3 or later
- Available USB port

Package Contents

- HDD Docking Enclosure
- USB 2.0 Cable (Type A to B)
- Power Adapter
- Quick Start Guide
- Warranty / Registration Card

